



LEKA PACK LINE

Packaging Machinery Catalogue

From standalone machines to fully integrated turnkey bottling lines.



HEADQUARTERS

MANUFACTURING BASE

INDUSTRIES SERVED



Food



Beverage



Sauce



Edible Oil



Cosmetics



Home Care



Chemical

PRODUCT RANGE

01

Filling

02

Capping

03

Sealing

04

Labeling

05

Conveying

06

Turnkey



EQUIPMENT SYSTEMS

What We Supply

Standalone machines or fully integrated lines — covering **filling, capping, sealing, labeling, feeding and conveying**.

01



Filling Machine

Matched to product viscosity, fill volume and target output.

02



Capping Machine

Cap tightening with torque control, ready for inline automation.

03



Foil Sealing Machine

Electromagnetic induction sealing of aluminium foil liners.

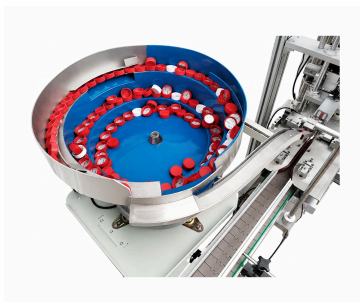
04



Labeling Machine

Round, square, double-side and top labeling on one platform.

05



Feeding System

Automatic cap sorting and feeding, synchronized to the line.

06



Complete Line

Filling, capping, sealing and labeling, integrated end to end.

Supplied as **standalone machines** or as **complete turnkey lines**. Final configuration is confirmed against your product, container samples and plant layout.

FILLING · SELECTION GUIDE

Choosing the Right Filling Machine

Start with the product type, then confirm the container, fill volume, target output and automation level.

Selection Logic

LEKA recommends equipment by application route, not model name only. Product behavior, bottle structure and output target define the practical configuration.

PRODUCT TYPE	RECOMMENDED METHOD	SUGGESTED MODEL	KEY CHECKS	BUYER TIP
Thin / water-based	Gear-pump or aqueous filling	LEKA-FLWS-CLB06 / CLB12 LEKA-FLDT-ZZB01	Fill volume · Foam · Accuracy	Best for water, thin liquid and household liquid applications.
Foaming liquids	Dive-nozzle / anti-foam setup	LEKA-FLWS-CLB06 LEKA-FLSF series	Foam height · Bottle neck · Speed	Sample testing matters more than fixed output specs.
Viscous liquids	Piston or rotor-pump filling	LEKA-FLsemi-HS01 LEKA-FLSFZ series	Viscosity · Stringing · Cleaning	Confirm flowability and cleaning method before quoting.
Pastes / sauces	Piston filling with hopper	LEKA-FLsemi-HS01 LEKA-FLSFZ series	Particles · Hopper · Temperature	Products with particles require separate filling review.
Edible oil	Servo oil filling	LEKA-FLSF-RHY8-B LEKA-FLSF-RHY12-B	Drip control · Bottle stability	Do not specify edible oil like ordinary thin liquid.
Large-volume liquids	High-volume filling route	LEKA-FLSF-04-A 5L-30L option	5L-30L · Container handling	Large containers need a different route from small bottles.
Corrosive chemicals	Corrosion-resistant filling	LEKA-FLFF series Anti-corrosion option	Wetted parts · Safety · Compatibility	Confirm chemical, bottle and seal compatibility first.

Prepare These Four Things Before Requesting a Quote

FASTER MODEL CONFIRMATION

01

Product Sample

Provide product photos, video or physical samples. Confirm viscosity, foam, particle size and corrosiveness.

02

Bottle & Cap Samples

Confirm bottle material, dimensions, neck size, body stability and cap type.

03

Labeling & Coding

Confirm label type, labeling method and position, plus date, batch or QR code location.

04

Output & Budget

Confirm target BPH, budget range, automation level, voltage, air supply and site layout.

FILLING · SERIES OVERVIEW

Filling Series Selection Map

Each series is positioned by application, business scale, representative models and reference specifications.

SERIES LOGIC Application first	QUOTATION Sample confirmed
--	--------------------------------------

FLsemi STARTER CHOICE

Multi-purpose semi-auto filling series

FLsemi-CLB01 / CLB02 / HS01

BEST-FIT Manual / small workshops	PRODUCTS Thin liquids, paste, sauce
---	---

RANGE By product sample	HEADS 1-2	OUTPUT By product sample	AUTOMATION Semi-auto
----------------------------	--------------	-----------------------------	-------------------------

FLDT SINGLE-HEAD AUTO

Practical high-speed single-head auto filler

FLDT series

BEST-FIT Small-mid businesses	PRODUCTS Customizable by product
---	--

RANGE 10 mL – 10 L	HEADS 1	OUTPUT By product sample	AUTOMATION Auto
-----------------------	------------	-----------------------------	--------------------

FLSF OIL & VOLUME

High-speed filling series

FLSF-RHY8-B / FLSF-04-A

BEST-FIT Mid-large high-output plants	PRODUCTS Edible oil / large-volume liquids
---	--

RANGE 100-5000 mL / 5-30 L	HEADS 4-12	OUTPUT 1800-2800 BPH / 240-480 drums/hour	AUTOMATION Auto
-------------------------------	---------------	--	--------------------

FLWS WATER-BASED

Aqueous high-speed filling series

FLWS-CLB06 / CLB08 / 10 / 12

BEST-FIT Mid-large aqueous-product firms	PRODUCTS Aqueous / thin / detergent
--	---

RANGE 10-5000 mL	HEADS 4-12	OUTPUT 1400-4000 BPH	AUTOMATION Auto
---------------------	---------------	-------------------------	--------------------

FLSFZ TRACKING FILL

Servo-tracking filling machine

FLSFZ series

BEST-FIT Large high-throughput plants	PRODUCTS High-speed bottled liquids
---	---

RANGE By bottle type	HEADS 2-8	OUTPUT By project	AUTOMATION Auto
-------------------------	--------------	----------------------	--------------------

FLFF CHEMICAL DUTY

Corrosion-resistant filling series

FLFF-02-A / FLFF-10-B / FLFFX-10-B

BEST-FIT Small-mid chemical plants	PRODUCTS Corrosive liquids / chemicals
--	--

RANGE 50-1000 mL	HEADS 2-12	OUTPUT 1000-1800 BPH	AUTOMATION Auto
---------------------	---------------	-------------------------	--------------------

Selection rule: choose the series by product category, viscosity, container volume and output target first. Final fill range, speed and accuracy should still be confirmed against product samples, bottle dimensions and line integration requirements.

FILLING MODELS

Semi-Automatic Liquid Filling

Designed for small-batch production, trial runs, manual bottle handling and budget-sensitive liquid filling projects.

LEKA-FLsemi-CLB01 Single-Head Gear Pump Type



- Single-head gear pump for small-batch thin liquid and daily chemical liquid.
- Filling range: 1–15 L
- Filling capacity: 360–540 BPH

LEKA-FLsemi-CLB02 Double-Head Liquid Type



- Double-head synchronized filling for higher manual production output.
- Filling range: 1–15 L
- Filling capacity: 540–810 BPH

Best For

Small factories, laboratories, early-stage production and buyers who need to verify filling performance first.

Before Quotation

Confirm product sample, filling volume, bottle mouth size, target output and local voltage.

Upgrade Path

Can be upgraded from semi-automatic filling to automatic filling, capping, sealing and labeling line integration.

FILLING MODELS

Paste, Cream & Sauce Filling

Viscous products require confirmation of flowability, particles, stringing behavior and cleaning method before machine configuration.



LEKA-FLsemi-HS01 PRODUCT PHOTO



Anti-Drip Nozzle Prevents dripping and stringing; replaceable nozzle sizes.



Handwheel Setting Manual volume adjustment with digital counter record.



Five-Way Valve Supports hopper feeding and self-priming operation.



Leveling Caster Adjustable support for stable positioning and movement.

LEKA-FLsemi-HS01

Semi-Automatic Piston Paste Filling Machine

Designed for creams, gels, sauces, honey-like products and other viscous materials. Filling range, speed and product-contact configuration should be confirmed according to real samples.

FILLING RANGE

5–50 ml / 15–150 ml /
25–250 ml / 50–500 ml /
100–1000 ml

HEADS

1

REFERENCE CAPACITY

500 ml /
30–55 fills/min

Core Configuration Parameters

SAMPLE-BASED CONFIGURATION

Model	LEKA-FLsemi-HS01
Air Pressure	0.4 MPa – 0.8 MPa
Machine Size	43 × 43 × 155 cm
Net Weight	Approx. 50 kg
Filling Type	Piston filling
Drive Mode	Pneumatic cylinder reciprocation
Filling Head	Single head
Feeding Mode	Hopper feeding / self-priming

Hopper	40 L, customizable
Valve Body	Five-way valve body
Nozzle Size	4 / 5 / 6 / 7 / 8 / 10 / 11 mm
Contact Parts	SUS304 / 316L stainless steel
Cylinder	Lathe-ground, high concentricity
Sealing	Fluororubber sealing parts
Frame	SUS304 stainless steel
Caster	Leveling caster with adjustable support

Suitable Products

Cream, gel, sauce, honey-like products and selected viscous daily chemical products.

Key Confirmation

Viscosity, particles, stringing behavior, temperature, cleaning method and hopper requirement.

Configuration Note

Sample testing can confirm the piston filling setup and upgrade path to downstream capping, sealing and labeling equipment.

Discharge / suction speed, measuring cylinder, piston and sealing parts can be selected by product characteristics.

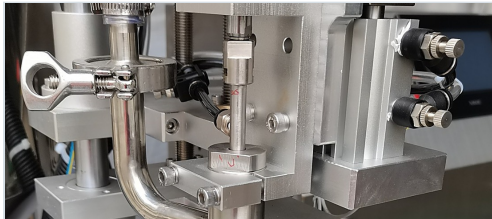
FILLING MODELS

FLDT Series Automatic Filling

A multi-functional automatic filling series for small and medium enterprises, configurable by product type, filling volume and production workflow.



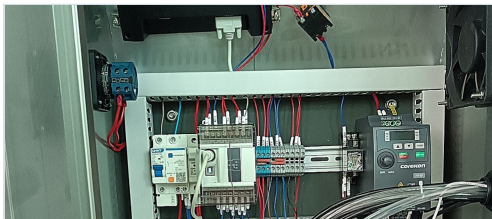
LEKA-FLDT SERIES PRODUCT PHOTO



Filling Head Single-head station for inline bottle positioning.



Hopper Feed Feed structure for semi-fluid or sample-based setup.



Control Cabinet Electrical layout for control and adjustment.



Conveyor Layout Transfer route with guide rails for future integration.

SERIES PAGE

LEKA-FLDT Series

Multi-Functional Automatic Filling Machine for Small and Medium Enterprises

Designed for liquid, paste, particle-containing liquid, sauce and daily chemical products. Filling method, contact parts and control setup are configured according to the filling material.

FILLING VOLUME 10 ml - 10 L	HEADS 1	POSITIONING SME Multi	OPTIONS 4
---------------------------------------	-------------------	---------------------------------	---------------------

Core Configuration Parameters

PRACTICAL SERIES OVERVIEW

Series	LEKA-FLDT Series
Position	Multi-functional automatic filling for SMEs
Filling Head	Single head
Method	Customized by filling product; gear pump / piston pump / peristaltic pump / rotary pump / etc.
Conveyor	Inline bottle conveyor
Bottle Feed	Manual feed or line transfer
Contact Parts	304L / 316L optional by material
Control	Visualized electronic control system

Products	Liquid / paste / particle liquid / sauce / daily chemical options
Material	Selected according to filling raw material
Volume	10 ml - 10 L
Bottle Type	Plastic / glass bottle option
Nozzle	Selected by liquid and neck
Line Match	Capper / sealer / labeler
Voltage	Confirmed by destination
Application	Small-to-medium production

Best For

Small and medium enterprises that need one automatic machine to cover multiple product categories and filling volumes.

Before Quotation

Confirm product type, particles, viscosity, filling volume, contact material requirement, voltage and downstream equipment need.

Series Options

VARIANT DIRECTIONS

FLDT-Gear Pump

For liquid and daily chemical products; gear pump configuration is selected according to sample and filling volume.

FLDT-Hopper Type

For paste, sauce and semi-fluid products; hopper, nozzle and feeding method are configured by material.

FLDT-316L Upgrade

304L / 316L contact parts available according to product material, sanitation and corrosion requirements.

FLDT-Line Ready

Visualized electronic control system and conveyor layout prepared for capping, sealing and labeling connection.

FILLING MODELS

Water & Daily Chemical Liquid Filling

For automatic filling production of water, thin liquids, daily chemical liquids and other free-flowing products.



LEKA-FLWS-CLB06 PRODUCT PHOTO



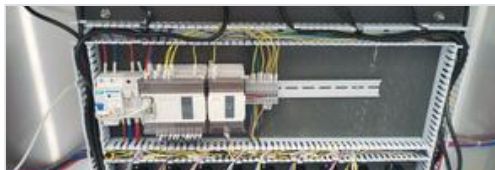
Six-Head Nozzles Visible filling path and multi-head nozzle arrangement.



Line Overview Filler integrated with conveyor and downstream equipment.



Capping Section Rear-side view of capping and transfer conveyor section.



Electrical Cabinet PLC, drivers and internal wiring layout.

LEKA-FLWS Series

Small-Capacity Water Filling Series

Suitable for water, thin liquids, daily chemical liquids and other free-flowing liquid products. The series can be configured with 4 / 6 / 8 / 10 / 12 heads according to output target, bottle size and downstream line requirement.

FILLING RANGE
10–5000 ml

HEAD OPTIONS
4 / 6 / 8 / 10 / 12

SERIES MODELS
CLB04 / CLB06 / CLB08 / CLB10 / CLB12

Core Configuration Parameters

WEBSITE MATCHED

Series	LEKA-FLWS small-capacity water filling series
Models	CLB04 / CLB06 / CLB08 / CLB10 / CLB12
Method	Pump filling
Dosing	316 stainless steel gear pump
Heads	4 / 6 / 8 / 10 / 12 heads
Volume	10–5000 ml
Output	Confirmed by head count, bottle size and speed target
Line Position	Before capping / sealing / labeling / coding

Accuracy	±1% reference
Voltage	220 V 50 Hz reference; customized
Air Pressure	0.4–0.6 MPa reference
Control	PLC and touchscreen operation
Material	SUS304 frame
Contact	SUS316 / SUS316L by product
CIP	Optional
Machine	Overall size and power depend on model selection

Suitable Products

Water, thin liquids, daily chemical liquids and other free-flowing products.

Before Quotation

Confirm product sample, bottle shape, filling volume, foam level, voltage and line connection.

Anti-Foam

Sample test required for foaming liquids before final quotation.

Drip-Proof

Optional configuration according to product and filling condition.

Cleaning

Flush pump, hoses and nozzles after production; CIP can be discussed.

FILLING MODELS

Edible Oil & Large-Volume Liquid Filling

The FLSF series covers edible oil bottle filling and larger-container liquid filling projects, with model selection based on volume, head count and target output.



MAIN SERIES

LEKA-FLSF Series

Multi-Head Servo Liquid & Oil Filling Series

Suitable for edible oil, lubricant oil and selected liquid or paste products. Based on current LEKA website models, the FLSF series covers standard bottle lines and 5L–30L large-container projects, with optional capping, sealing, labeling, coding and conveyor integration.

FILLING RANGE

100ml–5000ml / 5L–30L

HEAD RANGE

4–12

REFERENCE OUTPUT

2000–3600 BPH / 240–480 barrels/hr

POWER RANGE

4.0–7.5 kW

FLSF Series Reference Specifications

OFFICIAL WEBSITE SERIES DATA

Series Name	LEKA-FLSF Series
Representative Models	06-C / RHY8-B / RHY12-B / 04-A
Series Positioning	Multi-head servo filling series
Filling Heads	4–12 heads (by model)
Standard Volume Range	100ml–5000ml
Large-Container Range	5L–30L (04-A)
Standard Ref. Output	2000–3600 bottles/hour
Large-Container Output	240–480 barrels/hour

Suitable Products	Edible oil, lubricant oil and selected liquid / paste products
Filling Method	Servo pump filling
Dosing System	High-precision oil pump / magnetic gear pump (by model)
Accuracy	±1% reference
Contact Material	SUS316 / SUS316L based on product
Control System	PLC + touchscreen
Voltage / Air	220V 50Hz ref. / 0.4–0.6MPa
Line Integration	Can connect with capping, sealing, labeling, coding and conveyors



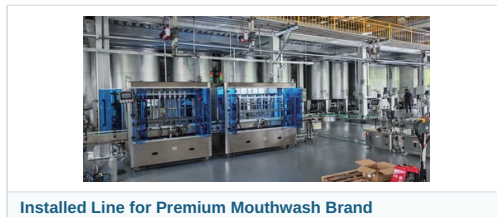
LEKA-FLSF-8H Machine View



LEKA-FLSF-12H Machine View



Configurable LEKA Line Layout



Installed Line for Premium Mouthwash Brand

Series Coverage

Current website models cover 06-C, RHY8-B, RHY12-B and 04-A, for both standard bottle lines and larger-container projects.

Confirm Before Quotation

Please confirm product viscosity, filling volume, bottle or pail type, cap type, target output, cleaning requirement and downstream packaging needs.

LEKA-FLSF-RHY12-B

Higher-output oil version

100ml–5000ml | 8–12 heads | 2600–3600 bottles/hour. Suitable for higher-output edible oil or oily-liquid projects.

LEKA-FLSF-04-A

5L–30L large-container version

5L–30L | 4 heads | 240–480 barrels/hour. Suitable for pail or large-container filling rather than standard small-bottle projects.

FILLING MODELS

Anti-Corrosive Chemical Liquid Filling

Corrosive liquid applications require confirmation of product chemistry, wetted-part material compatibility, bottle material and plant safety requirements before final machine configuration.



LEKA-FLFF SERIES PRODUCT PHOTO



10-Head Anti-Corrosive Filling Line

Complete line layout showing integrated filling, capping and downstream packaging stations.



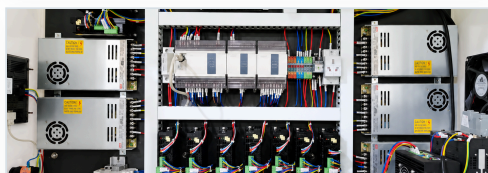
Adjustable-Angle Filling Head

The filling head angle can be adjusted to suit slanted bottles and special neck positions.



Adjustable-Angle Filling Head 2

Dual-head filling view showing stable alignment, bottle positioning and filling action.



Internal Electrical Components

Neat internal cabinet layout with PLC, drivers, power modules and organized wiring.

LEKA-FLFF Series

Anti-Corrosive Chemical Liquid Filling Series

Suitable for cleaner, disinfectant, corrosive chemical liquid and selected chemical products. Model configuration should be confirmed according to chemical property, bottle material and required output.

FILLING RANGE
50–1000 mL

HEAD OPTIONS
2 / 4 / 6 / 8 / 10

REFERENCE CAPACITY
1000–1800 BPH

Core Configuration Parameters

QUOTATION REFERENCE

Series	LEKA-FLFF anti-corrosive filling series
Filling Type	Anti-corrosive liquid filling
Filling Heads	2 heads
Range	50–1000 mL
Capacity	1000–1800 BPH
Application	Cleaner / disinfectant / corrosive liquid
Line Position	Can connect with downstream capping, sealing or labeling
Upgrade Path	LEKA-FLFF-10-B / LEKA-FLFFX-10-B

Contact Parts	Confirmed by chemical compatibility
Bottle Material	Confirmed by sample and bottle material
Corrosion Level	Required before final quotation
Control	Configured according to project requirement
Nozzle Layout	Matched to bottle and liquid condition
Safety	Confirm odor, fume and workshop safety demand
Voltage	Customized by destination
Final Scope	Detailed project parameters confirmed in quotation

Suitable Products

Cleaner, sanitizer, corrosive chemical liquid and selected chemical products requiring anti-corrosion contact configuration.

Key Confirmation

Confirm chemical composition, odor or fume condition, corrosion grade, bottle material and plant safety requirement.

Contact Material

Wetted parts should be selected according to the actual liquid and chemical compatibility result.

Bottle Compatibility

Confirm bottle material, neck size and transfer stability before final line layout.

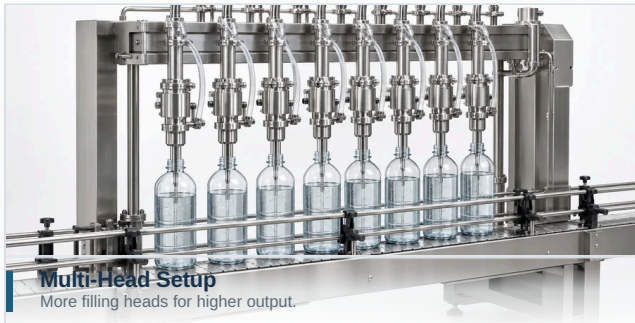
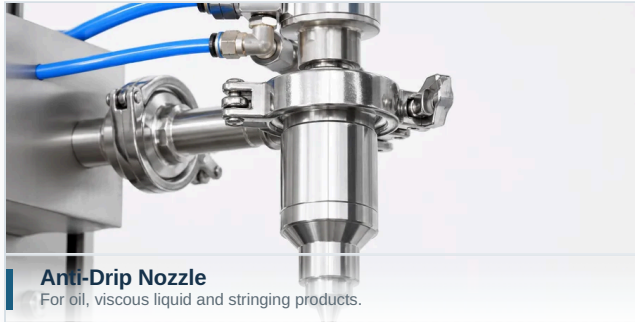
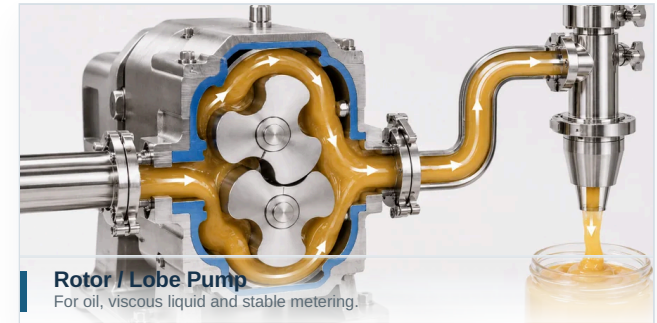
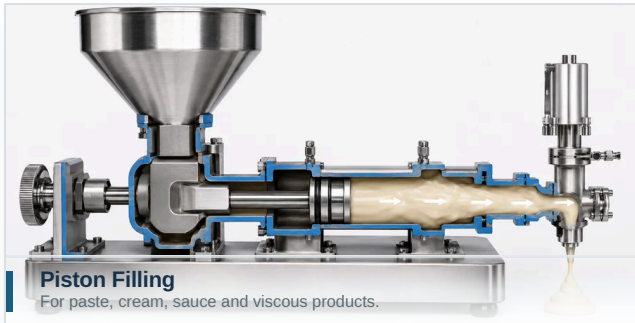
Higher-Capacity Options

LEKA-FLFF-10-B and LEKA-FLFFX-10-B can be discussed for higher-output anti-corrosion projects.

CONFIGURATION OPTIONS

Filling Methods & Optional Configurations

Filling method and optional parts should be confirmed by product behavior, container, accuracy target and cleaning requirement.



旋盖设备

自动旋盖设备

旋盖效果取决于盖型、瓶身稳定性、扭矩要求以及与灌装线的连接方式。



LEKA-CP-SERIES · 在线旋盖配置



旋盖机构 用于瓶盖定位、压紧与旋紧，适合自动旋盖应用。



夹瓶机构 瓶身导向与夹持支撑，提高旋盖过程中的定位稳定性。



伺服控制 支持精准速度与扭矩输出，便于程序化控制。



在线输送 输送布局可连接灌装设备与后段包装设备。

LEKA-CP-Series 自动旋盖机系列

适用于包装线自动旋盖。报价前需根据样品确认盖径、扭矩设置、瓶型稳定性和目标产能。

适用盖型
螺纹盖塑料盖

线体类型
在线自动旋盖

参考产能
根据样品确认

系列配置重点

按样品确认配置

选型前确认

- **盖子尺寸:** 盖径、高度与盖子结构。
- **瓶身稳定性:** 瓶型、重心与输送支撑方式。
- **扭矩要求:** 旋紧效果与密封要求。
- **产能目标:** 旋盖速度需匹配前端灌装设备。

常见配置

- **旋盖单元:** 摩擦轮旋紧或定制旋盖头。
- **输送系统:** 瓶距、导轨与线体连接方式。
- **上盖方式:** 人工放盖或选配盖提升装置。
- **整线连接:** 可衔接灌装、封口、贴标和喷码设备。

适合产品

适用于食品、饮料、化妆品、洗涤剂 and 化工瓶装产品的稳定旋盖包装线。

重点确认

盖型、瓶口尺寸、目标扭矩、瓶身稳定性以及所需线体速度。

配置提示

LEKA-CP-Series 可作为单机旋盖设备使用，也可与自动灌装、封口和贴标设备组成整线。
报价前建议提供瓶祥和盖样，用于确认旋盖方式、扭矩控制和输送布局。

SEALING & CODING

Sealing & Coding

Foil sealing should be confirmed by bottle mouth size, foil liner type and production speed; coding is selected as a project configuration item.

GLF-1900 Air-Cooled Foil Sealing Machine

STANDARD SEALING



For standard bottle-mouth foil sealing

Suitable for common round-bottle foil sealing projects. Bottle mouth diameter, liner material and line speed should be confirmed before quotation.

SEALING RANGE
15–60 mm / 40–120 mm

- Air-cooled structure for basic production lines.
- Recommended for standard bottle-mouth sealing.
- Speed depends on bottle size and foil liner quality.

GLF-4000 Aluminum Foil Sealing Machine

HIGHER OUTPUT



For higher-output foil sealing requirements

Designed for continuous packaging projects requiring higher output, cooling performance and stable line connection.

APPLICATION
High-output induction sealing

- Suitable for stronger sealing requirements and longer continuous operation.
- Cooling method and bottle mouth size should be confirmed in advance.
- Can be connected with conveyors and upstream/downstream equipment.

Before Sealing

Bottle mouth diameter, foil liner, bottle material, speed and sealing stability.

Coding Note

Select the coding system according to coding position and requirements; date, batch number and QR code coding can be supported.

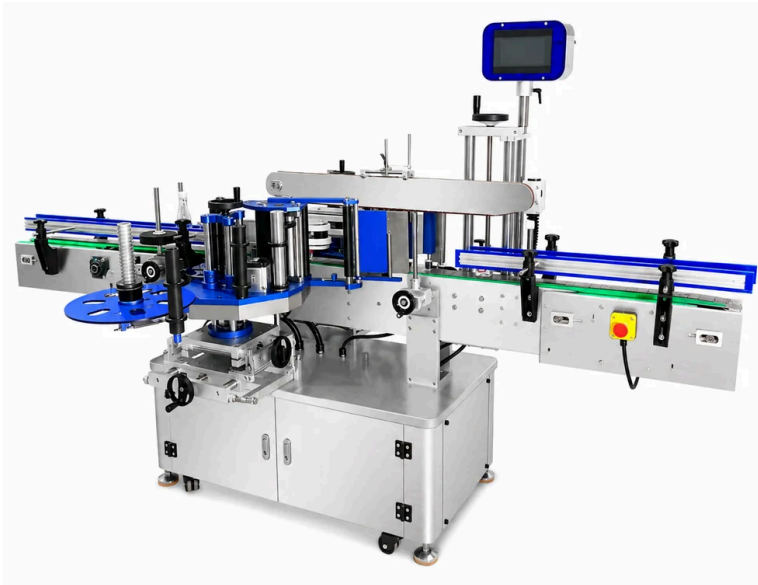
Line Position

Usually positioned after capping and before labeling; it can also be adjusted according to the site layout.

LABELING APPLICATION

Labeling Application

Labeling solutions should be confirmed according to bottle shape, label size, label position, conveyor speed and upstream / downstream line connection.



LEKA-LB-Series Automatic Labeling Series



Detail 01 | Multi-Axis Adjustment

Multi-axis adjustment flexibly adapts to different bottle shapes and labels for multi-purpose use.



Detail 02 | Label-Based Customization

The machine can be configured according to the customer's label sample to improve project matching.

LEKA-LB-Series

Automatic Labeling Application Series

LEKA can configure the machine structure according to the actual labeling application. LB020 is a recommended model for front-and-back / double-side labeling, while round-bottle wrap-around, flat-side, top, paging-card and special labeling options can be configured by project.

Bottle Type

Round / square / flat bottles / boxes

Label Type

Roll-fed adhesive labels single or double labels

Configuration

Configured by samples and production line

Application Options

Round Bottle Wrap-Around

For round bottles, cans or cylindrical packaging; label wraps around the container body.

Flat / Square Bottle Single-Side

For flat bottles, square bottles or side labels; bottle stability must be confirmed.

Double-Side / Front-Back

Key LB020 application for front-and-back labels or left-and-right double-side labels.

Top Labeling

For boxes, lids, trays or flat products requiring top label placement.

Paging / Card Labeling

For cards, bagged products, cartons and sheet-like products after paging separation.

Special Labeling Setup

Rotary, hot-melt glue or non-standard labeling structures require sample testing confirmation.

Before Quotation

Confirm bottle photos and dimensions, label size, label roll direction, label position, target speed and whether coding is required.

Configuration Note

Labeling performance depends on bottle stability, label material, surface curvature and conveyor positioning. Sample videos or physical samples are recommended.

AUXILIARY EQUIPMENT

Bottle Unscrambling, Conveying & Auxiliary Equipment

Auxiliary equipment connects the main machines, stabilizes bottle feeding, elevates caps, checks product weight and supports downstream collection for smoother line operation.

LEKA-BU Bottle Unscrambler / Collection Table



- **Frequency-controlled motor speed** with one-touch adjustment for quick matching to different line speeds.
- **High production efficiency** with safe and reliable operation for continuous bottle unscrambling and bottle collection.
- **Full SUS304 construction** offers durable structure plus easier cleaning and routine maintenance.

LEKA-CE Cap Elevator



- **Automatic cap elevating** suitable for continuous conveying of plastic caps and metal caps.
- Transfers caps to the **cap collection / cap feeding section** of the capping machine, reducing manual cap loading.

LEKA-CW Checkweigher



- **Automatic weight inspection** for production lines, automated conveyor systems and logistics transfer lines.
- Supports **upper / lower limit judgment and weight grading / sorting**, and can also be used for post-packaging multi-pack or missing-part detection.

Conveyor Line Confirmation

Conveyor direction, height, width and speed should be confirmed according to factory layout and complete line flow.

End-of-Line Connection

Cartoning, case sealing and other end-of-line equipment can be integrated according to project requirements.

Selection Reminder

Auxiliary equipment should be confirmed together with bottle type, cap type, target capacity, site conditions and main machine rhythm.

Configuration Principle: Auxiliary equipment supports the complete packaging line, but does not replace the selection of core machines such as filling, capping, sealing and labeling.

Complete Packaging Line Solutions

From semi-automatic setups to compact automatic lines and higher-output systems, we configure the right solution based on product, bottle, capacity and budget.



Example flow: Bottle unscrambling / infeed → Filling → Capping → Foil sealing / coding → Labeling → Collecting / packing

Starter Semi-Automatic Setup

Ideal for new brands and small-batch production with flexible investment, simple operation and easy future upgrades.

- **Best for**
Start-up factories / small-batch production
- **Products**
Sauces, daily chemicals, cosmetics, edible oil
- **Operators**
1–2 operators
- **Process**
Semi-automatic filling → manual capping → manual labeling
- **Upgrade**
Can add capping, labeling or automatic conveying later

Compact Automatic Line

Designed for small and medium factories with stable orders, balancing efficiency, labor saving, cost and footprint.

- **Best for**
Small and medium factories with stable orders
- **Products**
Water-based liquids, daily chemicals, edible oil
- **Operators**
2–4 operators
- **Process**
Unscrambling → filling → capping → labeling → collecting
- **Upgrade**
Add more filling heads and downstream packaging modules

Higher-Output Automatic Line

Built for higher output, multi-shift production and larger factories, with room for inspection, cartoning and palletizing.

- **Best for**
Medium and large factories / high-output production
- **Products**
Oil products, water-based liquids, chemical liquids
- **Operators**
Engineering-based production management
- **Process**
Automatic bottle infeed → multi-head filling → capping → labeling → checkweighing → cartoning
- **Upgrade**
Add inspection, cartoning, case sealing and palletizing

APPLICATION GUIDE

Product Application Guide

Quickly match filling methods, configuration focus and pre-quotation information by product category.

Check Product Behavior

Viscosity, foam, particles and corrosiveness determine filling structure and contact materials.

Confirm Package Details

Bottle shape, mouth size, cap style and label position affect capping, labeling and line connection.

Match Output Target

Select semi-automatic, single-machine or automatic line based on speed, budget and upgrade plan.

Product Category	Suggested Method	Configuration Focus	Suggested Configuration	Before Quotation
Sauce / Paste	Piston filling	Viscosity / particles / stringing / cleaning	HS01 for small batches; automatic piston filling line for higher output	Sample / particle size / filling volume / hopper requirement
Edible Oil	Servo piston or flow-meter filling	Anti-drip / volume accuracy / bottle stability	FLSF-RHY8-B; RHY12-B for output upgrade	Oil viscosity / volume / bottle / cap
Detergent / Daily Chemical Liquid	Pump or liquid filling	Foam / corrosiveness / bottle material compatibility	FLWS-CLB06; anti-corrosion option for corrosive products	Foam condition / contact material / target output
Shampoo / Cosmetics	Pump or piston filling based on viscosity	Viscosity / stringing / cleaning / changeover	Confirm filling structure by sample test; connect with capping and labeling	Viscosity / bottle / label position / cap
Water-Based Liquid	Water-type filling / multi-head filling	Output / accuracy / liquid level consistency	FLWS-CLB06; multi-head option for higher output	Volume / bottle / target speed
Corrosive Chemical	Anti-corrosion filling	Contact material / safety / corrosion grade	FLFF-02-A; anti-corrosion materials configured by MSDS	MSDS / corrosiveness / concentration / bottle material

Application Note

This page is for quick preliminary filling solution selection. Final machine model, speed, product-contact material and line configuration should be confirmed based on product samples, bottles, caps, labeling method and factory layout.

INQUIRY PREPARATION

Engineering Confirmation & Quote Checklist

Send the information below so LEKA can recommend the suitable single machine, full-line configuration, automation level and quotation range.

BEFORE QUOTATION

A reliable quotation is not based on model names only. We configure by product characteristics, container size, cap / label samples, output target, utility conditions and factory layout.

01 Product & Material

- Product name / application**
Match filling principle and contact materials.
- Viscosity / flowability**
Confirm piston, pump, gravity or pressure filling.
- Particles / pulp / suspended matter**
Confirm valve, pipe and nozzle structure.
- Foam / stringing / dripping**
Confirm anti-foam and anti-drip configuration.
- Corrosive / flammable risk**
Confirm material grade and safety configuration.

02 Container & Volume

- Filling volume range**
For example: 50–500 ml / 1–5 L.
- Bottle drawing or sample**
Confirm bottle size, shape and stability.
- Bottle material**
Plastic, glass, metal or flexible package.
- Neck angle / opening size**
Affects filling position and splash control.
- Bottle stability**
Confirm conveyor, clamping and handling design.

03 Cap / Label / Coding

- Cap sample & diameter**
Confirm cap feeding, tightening and chuck structure.
- Torque requirement**
Avoid loose caps or cap damage.
- Label sample & label surface**
Single-side, wrap-around, round or special label.
- Label position / accuracy**
Confirm sensor and fixture configuration.
- Date / batch / QR code**
Confirm inkjet, thermal transfer or laser coding.

04 Factory & Output

- Target capacity**
Bottles per hour / minute and automation level.
- Local voltage / frequency**
110V / 220V / 380V, 50Hz / 60Hz.
- Air supply condition**
Confirm air compressor and air tank requirement.
- Factory layout direction**
Straight line, L-shape or U-shape connection.
- Destination / shipping method**
Confirm packing, certificates and export documents.

Quotation Rule

Reliable quotations require confirmation of **product properties, container dimensions, cap / label samples, output target, utility conditions and factory layout**. Complete information improves solution accuracy and reduces reconfiguration risk.

Recommended Submission Method

Send sample videos, bottle / cap / label photos and target output first. Then provide drawings or physical samples for final configuration.

STEP 01
Product Sample

STEP 02
Bottle / Cap
Details

STEP 03
Output & Layout

CONTACT / NEXT STEP

Contact / Next Step

Send us your product, bottle, cap, label and output target. LEKA will recommend a suitable single machine or complete line configuration based on real production conditions.

Prepare These Details for a More Accurate Quotation

LEKA reviews product characteristics, container details, downstream packaging, target output and factory conditions before recommending filling, capping, sealing, labeling, coding and conveyor combinations.

BEFORE QUOTATION

The more complete the information is, the closer the proposal will be to real production needs, reducing later reconfiguration and trial-and-error costs.

01 Product

Product name, viscosity, foam, particles, corrosiveness, temperature requirement and cleaning method.

02 Container

Bottle shape, volume, mouth size, bottle stability and whether sample testing is required.

03 Downstream

Cap style, foil liner, label position, date/batch code, QR code and final packing method.

04 Factory

Voltage, air supply, factory layout, target output and whether full-line integration is needed.

Contact Information

Website lekapackline.com
 Email sales@lekapackline.com
 Phone/WhatsApp +86 18126903504



From Single Machine Purchase to Full Line Planning

This catalog is for first-stage selection. Final configuration depends on product samples, bottle design, cap samples, labels and factory conditions.

- Sample Check
- Machine Selection
- Layout Plan
- Quotation
- Testing